



BPMS SOFTWARE

bpms@bpms.net

877-250-2698

BPMS Administrator

Setting up a Test Environment

Version 1.0

Last Updated: 11 November 2013

Table of Contents

PURPOSE OF THIS DOCUMENT	1
STEP 1 – COPY BACK-END FROM PRODUCTION ENVIRONMENT.....	1
STEP 2 – COPY SQL SERVER DATABASE TO TEST SERVER (IF APPLICABLE)	1
STEP 3 - SOFTWARE DOWNLOAD (TEST ENVIRONMENT).....	1
STEP 4 – INSTALL SOFTWARE	2
STEP 5 – RUN THE "BPMS 6 ADMIN (TEST)" APPLICATION.....	2
STEP 6 – CHANGE BACK-END DATABASE (IF APPLICABLE).....	3

Purpose of this Document

This document explains how to set up a Test environment for BPMS Administrator.

A test environment can be helpful in the following situations:

- To train new staff
- To test a new version of a BPMS application after a new release before updating the production environment
- To test BPMS Import feature against a test database before executing in production

Step 1 – Copy Back-End from Production Environment

Make a copy of the production back-end folder to a test folder. (e.g. \\WATER\BACKFLOWBPMS6AD_Test)

Step 2 – Copy SQL Server Database to Test Server (if applicable)

If you have a SQL Server database, ask our database administrator to make a copy of the production database to a test server. We recommend using a different database name than in the production environment such as **BPMS_Test**, preferably on a test server, if available.

Instructions to install SQL Server db: http://www.bpms.net/docs/BPMS6_Admin_SQLServer.pdf

Step 3 - Software Download (Test Environment)

If you need to install or reinstall the full “**BPMS 6 Admin (Test)**” application, click URL below:

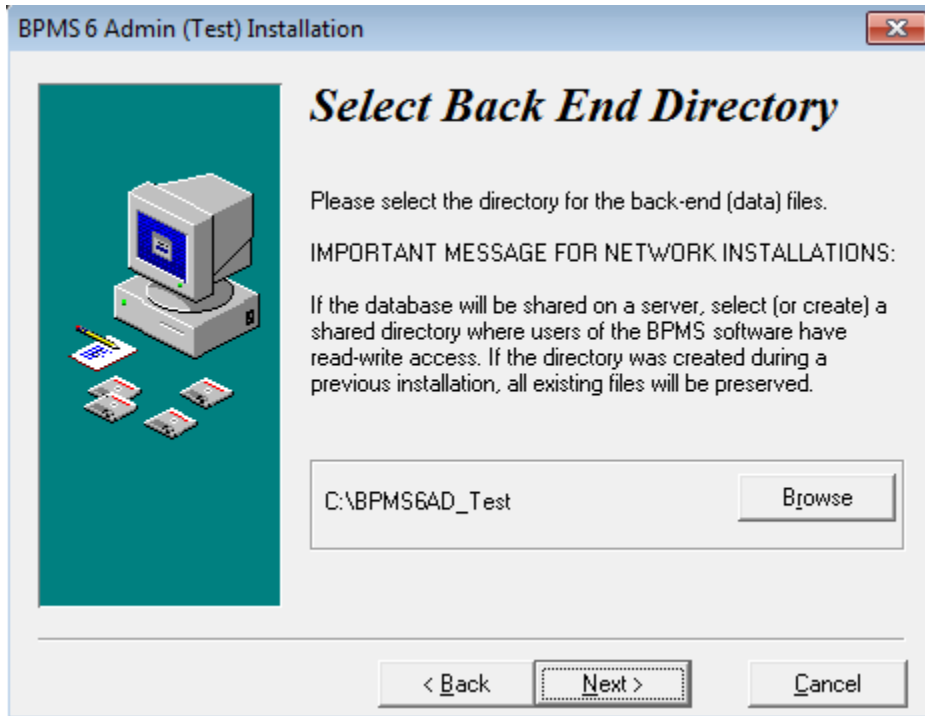
[DOWNLOAD BPMS 6 \(Test\) Full Install](#) (Approx. 110 MB)

To update on a computer that already has “**BPMS 6 Admin (Test)**” installed, click URL below:

[DOWNLOAD BPMS 6 \(Test\) update](#) (Approx. 13 MB)


Step 4 – Install Software

Run the **SETUP_TEST.EXE** file downloaded in Step 3. When you get to the step where you need to select the back-end folder, be sure to specify the test folder created in Step 1.



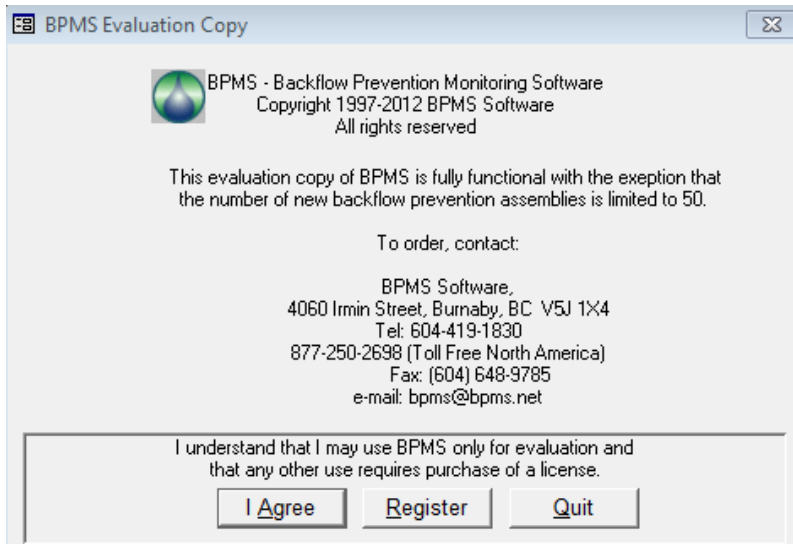
The default installation folder for the client application is C:\Program Files (x86)\BPMS6A_Test.

After installation makes sure users have modify permission to all files under C:\Program Files (x86)\BPMS6A_Test\ folder. For more information, go to http://www.bpms.net/docs/BPMS6_Admin_Installation.pdf

After installation, two red icons labeled "BPMS 6 Admin (Test)" and "BPMS 6 Tools (Test)" should be added to the desktop. Also, on the Windows  menu, under **All Programs**, a new program group named "BPMS 6 Admin (Test)" will be added.

Step 5 – Run the "BPMS 6 Admin (Test)" Application

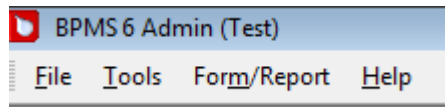
The first time you run the application, the following dialog box may appear..



Click **Register** then enter your product key. The Product Key can be found on the BPMS CD-ROM jewel case. If you don't have it, email bpms@bpms.net

In BPMS applications, the only visible differences will be:

- The app icon will be red and the app name will end with "(Test)".

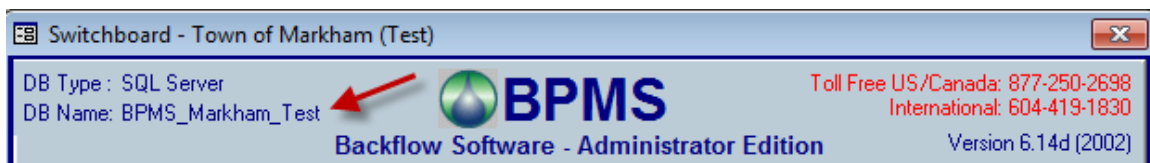


- The Switchboard title will also end with "(Test)".



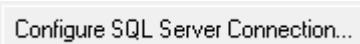
Step 6 – Change Back-End Database (if applicable)

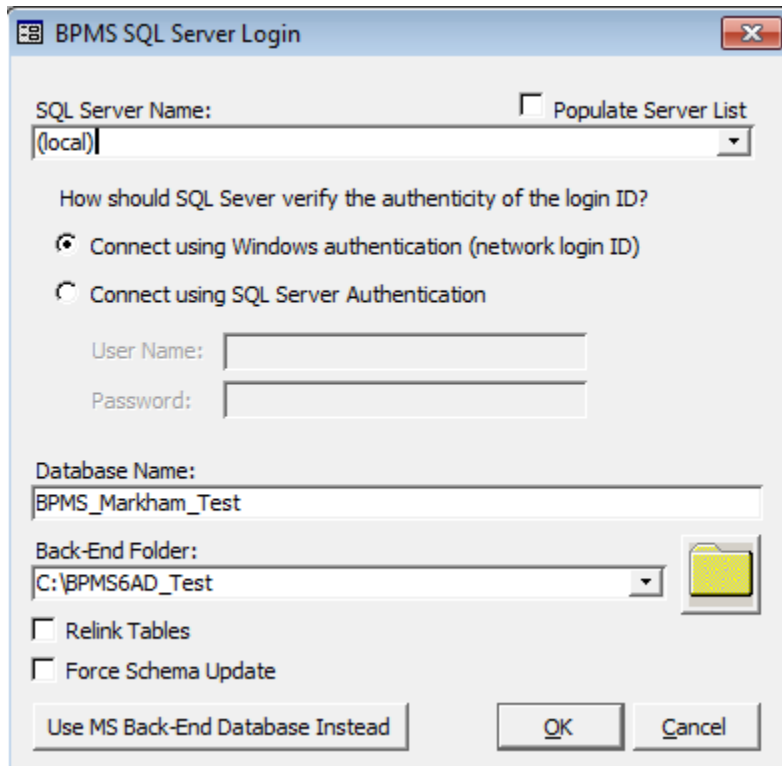
Finally, ensure that the back-end folder and database are from the test environment (not production).



To change the back-end folder and/or database, follow these steps:

- 1) From the BPMS Administrator Switchboard from click **Customize** button then click the **File Locations** tab.

- 2) For SQL Server back-end, click the  button then update the SQL Server Name, Database Name and Back-End Folder.



BPMS SQL Server Login

SQL Server Name: Populate Server List
(local)

How should SQL Server verify the authenticity of the login ID?

Connect using Windows authentication (network login ID)

Connect using SQL Server Authentication

User Name:

Password:

Database Name:
BPMS_Markham_Test

Back-End Folder:
C:\BPMS6AD_Test

Relink Tables

Force Schema Update

Use MS Back-End Database Instead

OK Cancel

- 3) For Microsoft Access back-end, click the  button next to "Back-End (Data)" text box then locate the Test folder and database.